


PARTNERING FOR MUTUAL SUCCESS

Kapco Manufacturing Capabilities

kapco.com | 800.843.5368





Our team of responsive, flexible and experienced professionals has been providing custom **coating and converting services since 1974.**

- Privately Held
- Centrally Located in Kent, OH
- 100,000 SF Plant Space
- 90 Employees and Counting
- ISO Certified to 9001 with Design
- Broad Range of Processes and Materials
- Prototype to Production

KAPCO'S CORE VALUES

Our promise to you and ourselves.

1

**Focus on
Customers**

2

**Do the
Right Thing**

3

**Strive for
Excellence**

4

**Be Part of
the Solution**

5

**Be
Flexible**

WHAT SETS US APART



Product Development

A true market partner to help take your idea from prototype to production.



Responsiveness

Industry experts with decades of experience to help you succeed.



Coating and Converting

Reducing the need for a multi-vendor supply chain - saving you time and money.

Custom Coating Capabilities

Manufacturing and
delivering what you need,
when you want it.





12" Coater

- Adhesive and top coating
- Up to 12" wide
- Rod Coater
- Slot Die Coating Head
- Laminator
- Corona Treating
- IR Drying ovens
- Small volume of chemistry needed for trials
- Multiple trials in one day



31" Coater

- Adhesive and top coating
- Wide range of substrates
- Up to 31 inches wide
- Closed loop tension control
- Air floatation ovens
- In-Line corona treating
- Laminator
- 2 coats in 1 pass on same side
- Reverse gravure with enclosed doctor blade chamber
- Development trials and Production runs



60" Coater

- Reverse roll coater
- Supported air Impingement drying
- In-line corona treating
- Re-moisturizer
- Laminator



80" Coater

- Adhesive & top coating
- Reverse gravure: 1-40 gsm
- Reverse roll: 3 roll design
- Rod coater in progress
- 39 inches to 81 inches wide
- Two-sided coating in one pass
- Air floatation ovens
- Supplemental IR ovens
- Two-sided in-line corona treating
- Ancillary smoothing bar
- Cross web profiling for lay-flat
- Laminator

COATER WIDTH	12"	31"	60"	80"
Emulsion Based	✓	✓	✓	✓
Adhesives	✓	✓	✓	✓
Top Coats	✓	✓	✓	✓
Corona Treater	✓	✓	✓	✓
IR Oven	✓	✓		✓
Natural Gas Oven		✓	✓	✓
Laminator	✓	✓	✓	✓
Gravure		✓		✓
Reverse Roll		✓	✓	✓
Rod Coater	✓			
Re-moisturizer		✓	✓	
Slot Coater	✓			
UV Curing		✓		
2 sides 1 pass				✓
2 coats 1 pass		✓		In Progress

Water-Based Coatings

Adhesive Coating

- Permanent
- Removable
- Microsphere (Ultra-Removable)
- Pigmented
- Heat-Activated
- Water-Dissolvable
- pH Neutral
- Dry Gum

Functional and Decorative Top Coating

- Tint
- Hydrophobic and Hydrophilic
- Inkjet, Laser, Indigo
- Block Out
- Thermal
- UV Ink Receptive
- Anti Fog
- Barrier
- Tactile Coatings



Facestock

- Paper
- Synthetic paper
- Film
- Vinyl
- Non-woven
- Foam
- Foil
- Graphoil
- Stainless steel

Custom Converting Capabilities

A whole new way to look at
materials, design, functionality and
end-use performance.

**Rotary/Laser
Die-Cutting**

**Flat-Bed
Cutting**

**Steel Rule
Die-Cutting**

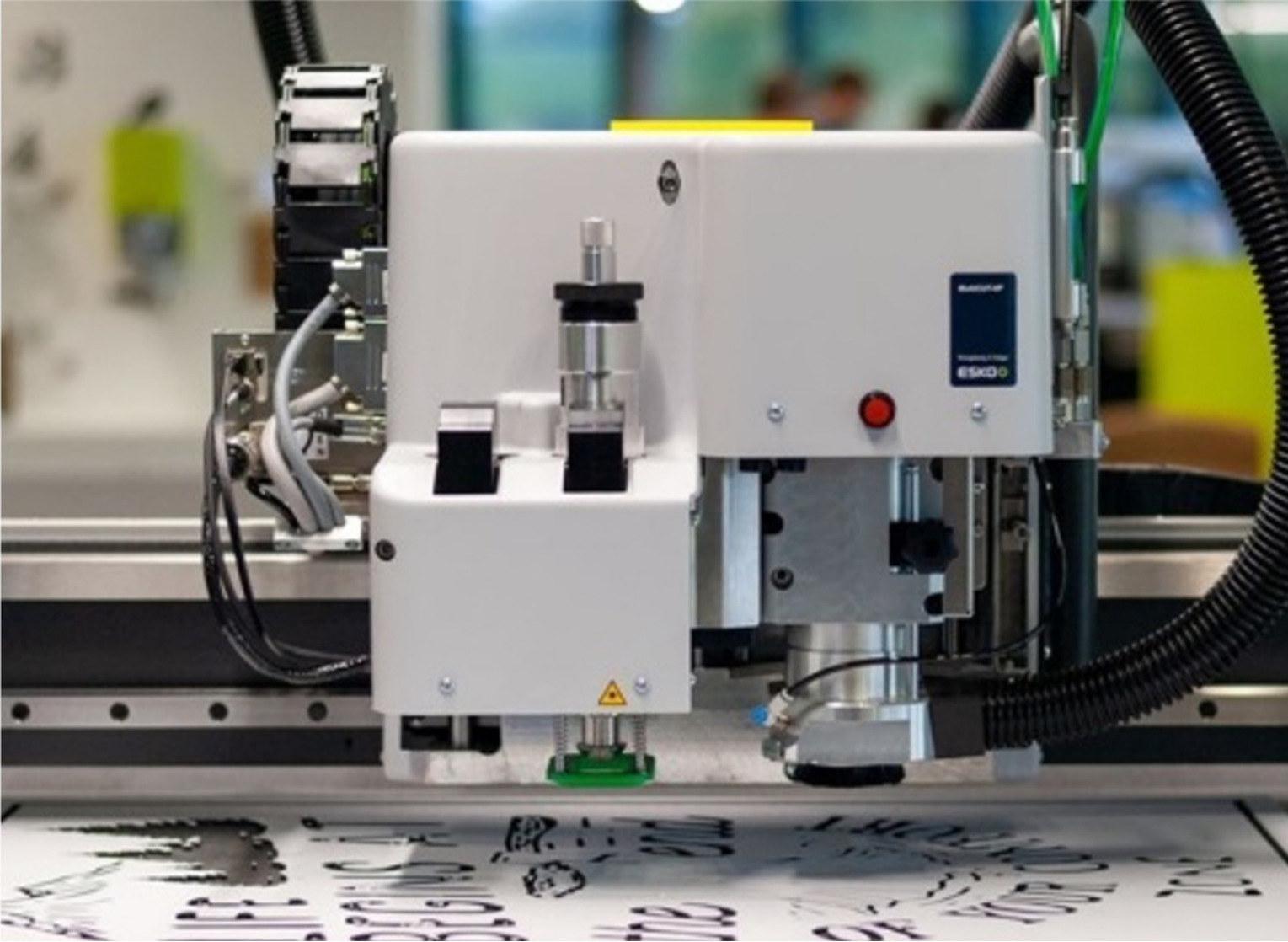
Slitting

Laminating



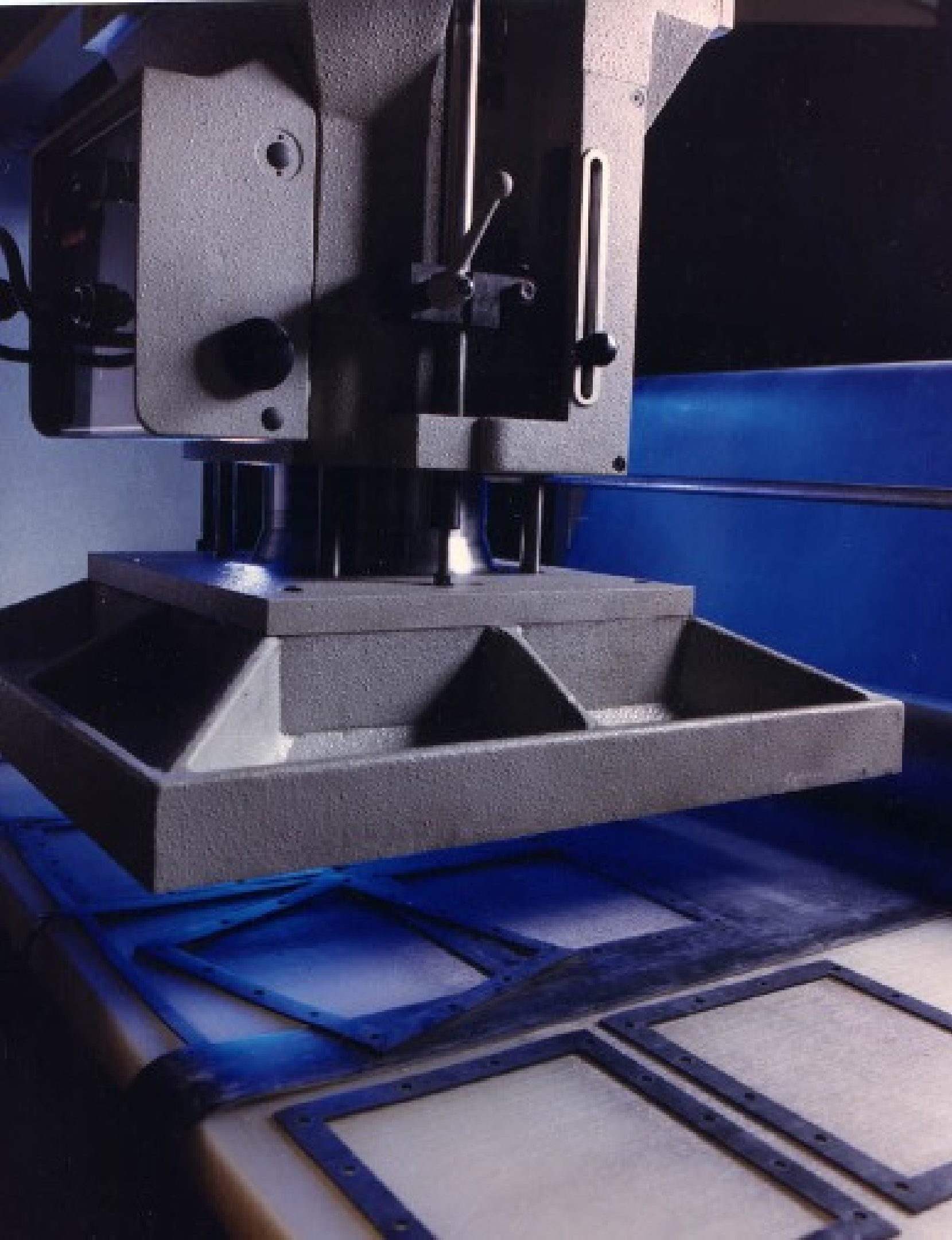
Rotary / Laser Die-Cutting —

- 7 to 18 inches wide
- In-line laser
- Servo driven / higher precision
- Island placement
- Printing and other accessories
- Multiple in-line capabilities
- In-line hot melt and UV coating



Flat-Bed Cutting

- 5 foot x 10 foot cutting table
- Specialized cutting tools optimized for material type and cutting technique
- Can handle corrugated material, solid board, foam, wood, plastics, and more
- Great for signage, packaging, and display production
- Perfect print-to-cut registration

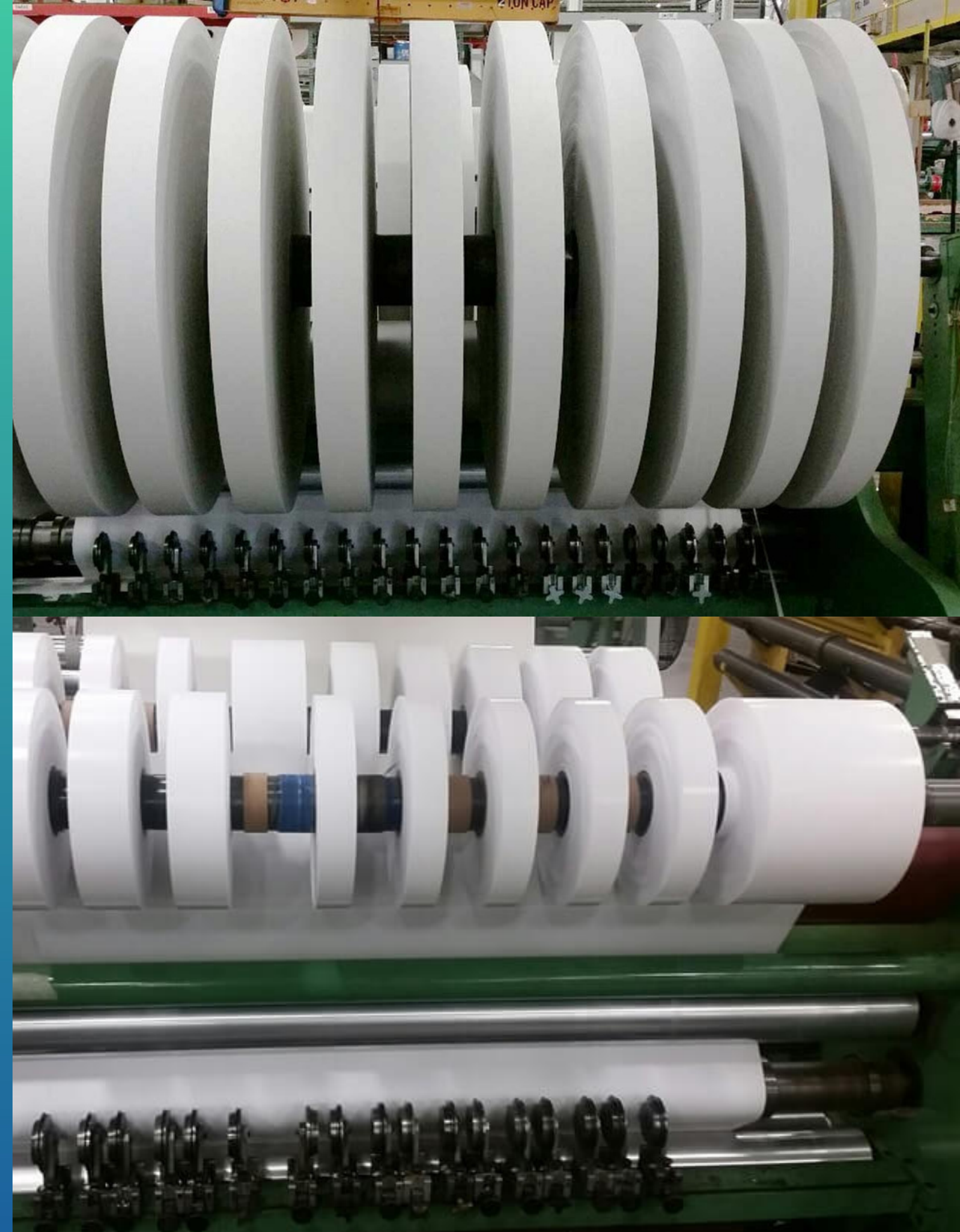


Steel Rule Die-Cutting —

- Die-cut to register
- Multiple in-line capabilities
- Up to 22 inches x 22 inches
- Cost-effective
- Ideal for foam, cardboard, cork, rubber, and plastic
- Can hold tight tolerances
- Great for large volume production

Slitting

- 10 Slitters
 - Shear cutting
 - Crush scoring
 - Razor cutting
 - Lever slitting
- Tight tolerances up to $\pm .005''$
- .250'' - 80'' slit width
- 1'', 1.5'', 2'', 3'', and 6'' ID cores



— Elite Cameron Slitter

Elite Cameron TW350-A Simplex Turret Winder

- Automatic cut off & tail attachment
- Turreted cantilevered rewind
- Horizontal unload table
- Automatic tension control
- Splice table
- Staging table
- Rewind diameter up to 14"
- Max. speed: 1000 ft./min.



Laminating

- Up to 63 inches wide
- Roll to sheet
- Roll to roll
- De-lam/Re-lam capabilities
- Up to 36 inch roll OD
- In-line slitting



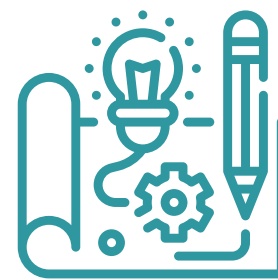
BRING YOUR IDEAS TO LIFE



IDEATION +
MATERIALS
EXPERTISE



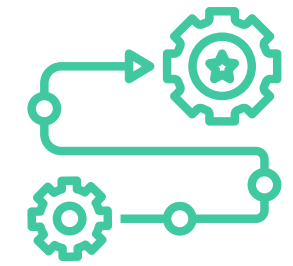
STATE OF
THE ART
TECHNOLOGY



PRODUCTION
+ CUSTOM
TRIALS



SCALE +
PROCESS
REFINEMENT



SYNERGY WITH
CONVERTING
CAPABILITIES



Thank You

Contact us today to connect with a Kapco expert, request a sample or submit a quote.



Phone Number

800.791.8964

Email Address

converting@kapco.com

Website

kapco.com